

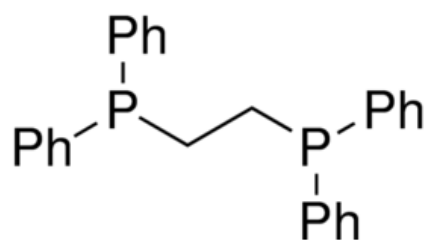


Headquarters
11555 Medlock Bridge Rd, #100
Johns Creek, GA 30097, USA
T: +1.888.658.1221; F:+1.678.619.2020

Manufacturing site
410 Forest Avenue
Sheboygan Falls, WI 53085, USA
T: +1.920.234.2322 F:+1.678.619.2020

E: info@ereztech.com W: <https://www.ereztech.com>

PRODUCT SPECIFICATION



Product Name	1,2-Bis(diphenylphosphino)ethane
Product Code	P3452
CAS Number	1663-45-2
Molecular formula	$C_{26}H_{24}P_2$
Linear formula	$(C_6H_5)_2PCH_2CH_2P(C_6H_5)_2$
Molecular weight	398.42
Sensitivity	air
Melting point	137-142C

TEST

SPECIFICATION

Assay (purity)	99%
Purity method	by HPLC
Appearance	white powder
NMR	conforms to structure
NMR P31	conforms to structure

For available packaging options or alternative purify grades please contact our technical services.

The offered information is intended to be used by technically qualified personnel at their discretion and risk. The current Specification sheet may be available at ereztech.com. Purchaser must determine the suitability of the product for its particular use.