

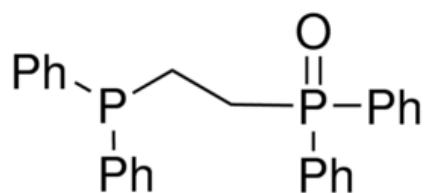


Headquarters
11555 Medlock Bridge Rd, #100
Johns Creek, GA 30097, USA
T: +1.888.658.1221; F:+1.678.619.2020

Manufacturing site
410 Forest Avenue
Sheboygan Falls, WI 53085, USA
T: +1.920.234.2322 F:+1.678.619.2020

E: info@ereztech.com W: <https://www.ereztech.com>

PRODUCT SPECIFICATION



Product Name	1,2-Bis(diphenylphosphino)ethane monooxide
Product Code	P4430
CAS Number	984-43-0
Molecular formula	C ₂₆ H ₂₄ OP ₂
Linear formula	(C ₆ H ₅) ₂ POCH ₂ CH ₂ P(C ₆ H ₅) ₂
Molecular weight	414.42
Melting point	195-199C

TEST

SPECIFICATION

Assay (purity)	98%
Purity method	by HPLC
Appearance	white powder

For available packaging options or alternative purify grades please contact our technical services.

The offered information is intended to be used by technically qualified personnel at their discretion and risk. The current Specification sheet may be available at ereztech.com. Purchaser must determine the suitability of the product for its particular use.