

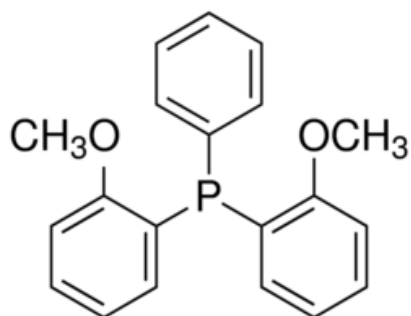


Headquarters
11555 Medlock Bridge Rd, #100
Johns Creek, GA 30097, USA
T: +1.888.658.1221; F:+1.678.619.2020

Manufacturing site
410 Forest Avenue
Sheboygan Falls, WI 53085, USA
T: +1.920.234.2322 F:+1.678.619.2020

E: info@ereztech.com W: <https://www.ereztech.com>

PRODUCT SPECIFICATION



Product Name	Bis(2-methoxyphenyl)phenylphosphine
Product Code	P2412
CAS Number	36802-41-2
Molecular formula	C ₂₀ H ₁₉ O ₂ P
Linear formula	(CH ₃ OC ₆ H ₄) ₂ PC ₆ H ₅
Molecular weight	322.34
Melting point	158-163C

TEST

Assay (purity)
Purity method
Appearance

SPECIFICATION

98%
by elemental analysis
white powder

For available packaging options or alternative purify grades please contact our technical services.

The offered information is intended to be used by technically qualified personnel at their discretion and risk. The current Specification sheet may be available at ereztech.com. Purchaser must determine the suitability of the product for its particular use.