

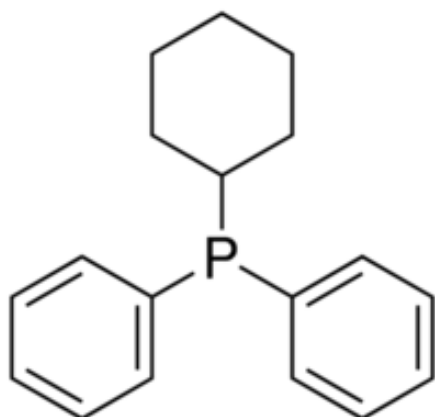


Headquarters
11555 Medlock Bridge Rd, #100
Johns Creek, GA 30097, USA
T: +1.888.658.1221; F:+1.678.619.2020

Manufacturing site
410 Forest Avenue
Sheboygan Falls, WI 53085, USA
T: +1.920.234.2322 F:+1.678.619.2020

E: info@ereztech.com W: <https://www.ereztech.com>

PRODUCT SPECIFICATION



Product Name	Cyclohexyldiphenylphosphine
Product Code	P2425
CAS Number	6372-42-5
Molecular formula	$C_{18}H_{21}P$
Linear formula	$C_6H_{11}P(C_6H_5)_2$
Molecular weight	268.34
Sensitivity	air
Melting point	58-62C

TEST

SPECIFICATION

Assay (purity)	97.5%
Purity method	by elemental analysis
Appearance	white crystals
Elemental analysis	%C=78.6-82.6; %H=7.7-8.1
NMR	conforms to structure

For available packaging options or alternative purify grades please contact our technical services.

The offered information is intended to be used by technically qualified personnel at their discretion and risk. The current Specification sheet may be available at ereztech.com. Purchaser must determine the suitability of the product for its particular use.