

**Headquarters**

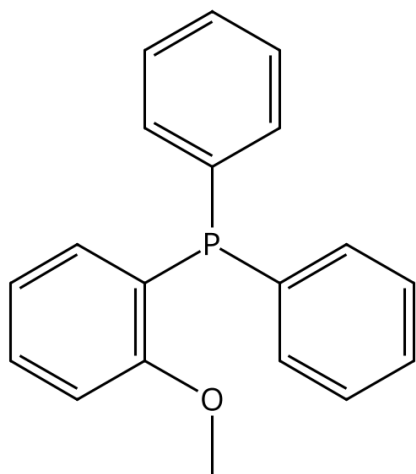
11555 Medlock Bridge Rd, #100  
Johns Creek, GA 30097, USA  
T: +1.888.658.1221; F: +1.678.619.2020

**Manufacturing site**

410 Forest Avenue  
Sheboygan Falls, WI 53085, USA  
T: +1.920.234.2322 F: +1.678.619.2020

E: [info@ereztech.com](mailto:info@ereztech.com) W: <https://www.ereztech.com>

## PRODUCT SPECIFICATION



Product Name	<a href="#">Diphenyl(2-methoxyphenyl)phosphine</a>
Product Code	P1209
CAS Number	53111-20-9
Molecular formula	$C_{19}H_{17}OP$
Linear formula	$(C_6H_5)_2PC_6H_4OCH_3$
Molecular weight	292.31
Melting point	121-123C

**TEST****SPECIFICATION**

Assay (purity)	98%+
Purity method	by integration NMR
Appearance	white crystalline powder
NMR	conforms to structure

For available packaging options or alternative purify grades please contact our technical services.

The offered information is intended to be used by technically qualified personnel at their discretion and risk. The current Specification sheet may be available at [ereztech.com](http://ereztech.com). Purchaser must determine the suitability of the product for its particular use.