

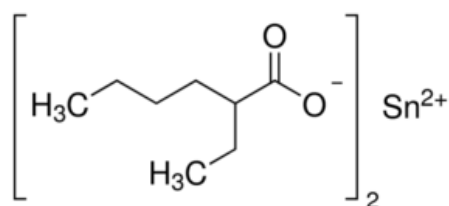


**Headquarters**  
11555 Medlock Bridge Rd, #100  
Johns Creek, GA 30097, USA  
T: +1.888.658.1221; F:+1.678.619.2020

**Manufacturing site**  
410 Forest Avenue  
Sheboygan Falls, WI 53085, USA  
T: +1.920.234.2322 F:+1.678.619.2020

E: [info@ereztech.com](mailto:info@ereztech.com) W: <https://www.ereztech.com>

## PRODUCT SPECIFICATION



Product Name	<a href="#">Tin (II) 2-ethylhexanoate</a>
Product Code	SN1100
CAS Number	301-10-0
Molecular formula	C <sub>16</sub> H <sub>30</sub> O <sub>4</sub> Sn
Linear formula	Sn(OOCC <sub>7</sub> H <sub>15</sub> ) <sub>2</sub>
Molecular weight	405.11

### TEST

Assay (purity)  
Purity method  
Appearance

### SPECIFICATION

92.5%+  
by elemental analysis  
colorless to pale yellow viscous liquid

For available packaging options or alternative purify grades please contact our technical services.

The offered information is intended to be used by technically qualified personnel at their discretion and risk. The current Specification sheet may be available at [ereztech.com](http://ereztech.com). Purchaser must determine the suitability of the product for its particular use.