

**Headquarters**

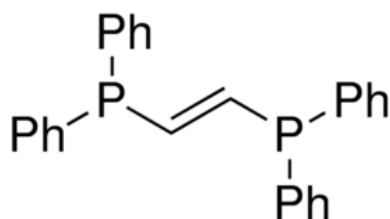
11555 Medlock Bridge Rd, #100  
Johns Creek, GA 30097, USA  
T: +1.888.658.1221; F:+1.678.619.2020

**Manufacturing site**

410 Forest Avenue  
Sheboygan Falls, WI 53085, USA  
T: +1.920.234.2322 F:+1.678.619.2020

E: [info@ereztech.com](mailto:info@ereztech.com) W: <https://www.ereztech.com>

## PRODUCT SPECIFICATION



Product Name	<a href="#">Trans-1,2-Bis(diphenylphosphino)ethylene</a>
Product Code	P3813
CAS Number	983-81-3
Molecular formula	C <sub>26</sub> H <sub>22</sub> P <sub>2</sub>
Linear formula	(C <sub>6</sub> H <sub>5</sub> ) <sub>2</sub> PCH=CHP(C <sub>6</sub> H <sub>5</sub> ) <sub>2</sub>
Molecular weight	396.40
Melting point	126-130C

**TEST****SPECIFICATION**

Assay (purity)	98%
Purity method	by elemental analysis
Appearance	white powder

For available packaging options or alternative purify grades please contact our technical services.

The offered information is intended to be used by technically qualified personnel at their discretion and risk. The current Specification sheet may be available at [ereztech.com](http://ereztech.com). Purchaser must determine the suitability of the product for its particular use.