

**Headquarters**

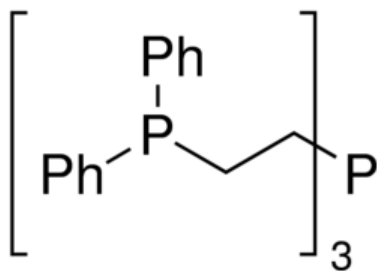
11555 Medlock Bridge Rd, #100
Johns Creek, GA 30097, USA
T: +1.888.658.1221; F:+1.678.619.2020

Manufacturing site

410 Forest Avenue
Sheboygan Falls, WI 53085, USA
T: +1.920.234.2322 F:+1.678.619.2020

E: info@ereztech.com W: <https://www.ereztech.com>

PRODUCT SPECIFICATION



Product Name	Tris[2-(diphenylphosphino)ethyl]phosphine
Product Code	P2038
CAS Number	23582-03-8
Molecular formula	C ₄₂ H ₄₂ P ₄
Linear formula	[(C ₆ H ₅) ₂ PCH ₂ CH ₂] ₃ P
Molecular weight	670.68
Melting point	134-135C

TEST**SPECIFICATION**

Assay (purity)	98%
Purity method	by elemental analysis
Appearance	white powder
Elemental analysis	%C=73.3-77.1; %H=6.2-6.5

For available packaging options or alternative purify grades please contact our technical services.

The offered information is intended to be used by technically qualified personnel at their discretion and risk. The current Specification sheet may be available at [ereztech.com](https://www.ereztech.com). Purchaser must determine the suitability of the product for its particular use.