

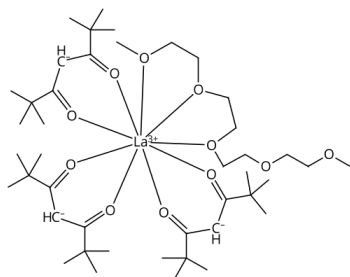


Headquarters
11555 Medlock Bridge Rd, #100
Johns Creek, GA 30097, USA
T: +1.888.658.1221; F:+1.678.619.2020

Manufacturing site
410 Forest Avenue
Sheboygan Falls, WI 53085, USA
T: +1.920.234.2322 F:+1.678.619.2020

E: info@ereztech.com W: <https://www.ereztech.com>

PRODUCT SPECIFICATION



Product Name	Tris(2,2,6,6-tetramethyl-3,5-heptanedionato)lanthanum(III) tetraglyme adduct (99.9%-La) (REO)
Product Code	LA9149
CAS Number	151139-14-9
Molecular formula	$C_{43}H_{79}LaO_{11}$
Linear formula	$La(C_{11}H_{19}O_2)_3 CH_3(OCH_2CH_2)_4OCH_3$
Molecular weight	910.98
Melting point	59C
Boiling point	125C/0.1mm

TEST

SPECIFICATION

Assay (purity)	98%+
Purity method	by titration
Metal purity	99.9%-La
Appearance	white to pale yellow crystals
Titration	by titration: % La=14.87-15.63 %
Titration type	complexometric

For available packaging options or alternative purify grades please contact our technical services.

The offered information is intended to be used by technically qualified personnel at their discretion and risk. The current Specification sheet may be available at ereztech.com. Purchaser must determine the suitability of the product for its particular use.