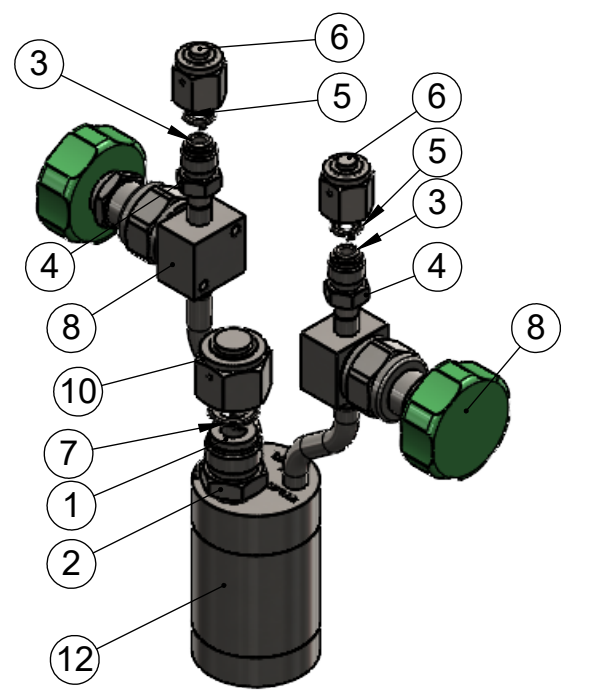
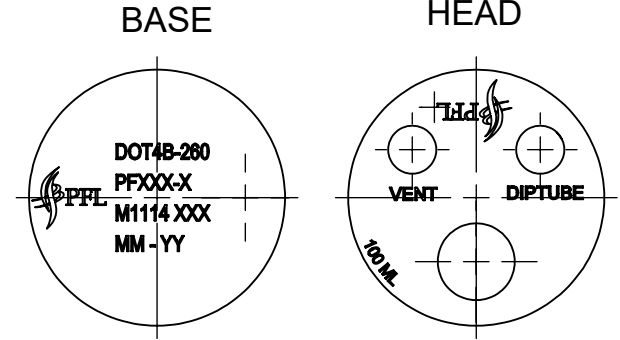
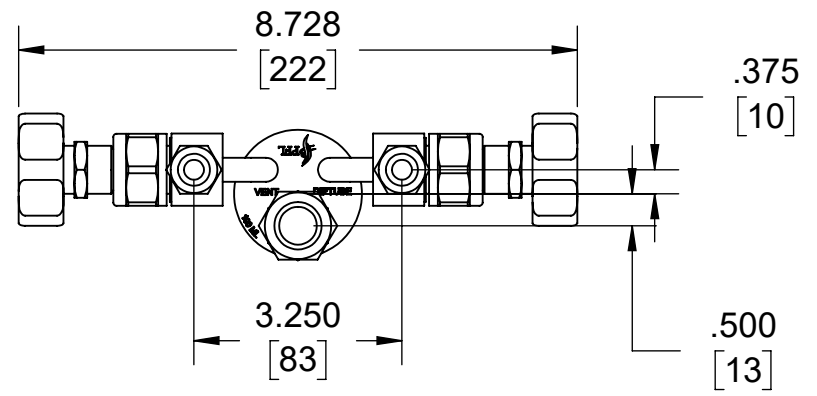
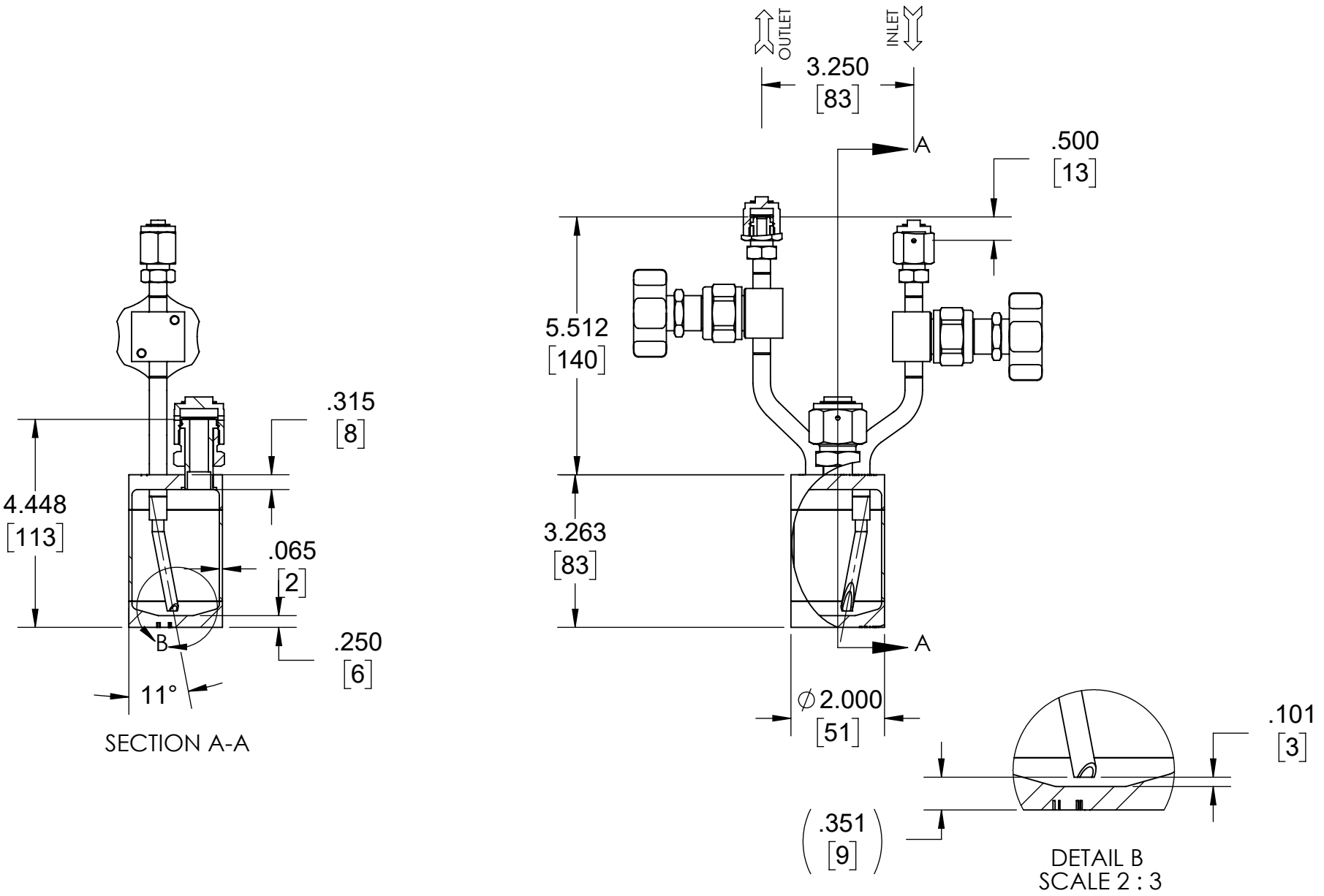


DESIGN SPECIFICATION	
CYLINDER MODEL	PFL 100CC FLAT TOP
CYLINDER SIZE	2" DIAMETER
CYLINDER WORKING VOLUME	100ML
TOTAL CYLINDER VOLUME	120ML
CYLINDER TARE WEIGHT	3.80 lbs
DESIGN PRESSURE	260 psi
DESIGN TEMPERATURE	250F/121C
INTERNAL FINISH	20ra, ELECTROPOLISH
EXTERNAL FINISH	40ra
FILLPORT	SWAGELOK, 1/2 VCR
INLET VALVE	SWAGELOK, SS-DSTW4
OUTLET VALVE	SWAGELOK, SS-DSTW4
THERMOWELL	NO
DIPTUBE	YES
MATERIAL OF CONSTRUCTION	316L SS
TEST PRESSURE	520 psi
D.O.T. SPECIFICATION	4B-260
TOLERANCE (UNLESS OTHERWISE SPECIFIED)	±.060

ZONE	REV.	DESCRIPTION	DATE	APPROVED
	1	INITIAL RELEASE	06/30/2014	



ITEM NO.	PART NUMBER	DESCRIPTION	QTY.
1	SS-8-VCR-3	GLAND, 1/2" VCR	1
2	SS-8-VCR-4	NUT, MALE, 1/2" VCR	1
3	6LV-4-HVCR-3-1.19SR	GLAND, HVCR, 3/8" BW, 1.19" LG, UHP	2
4	SS-4-HVCR-4SR	NUT, MALE, VCR, 1/4"	2
5	SS-4-VCR-2-GR	GASKET RETAINER, 1/4"	2
6	SS-4-VCR-CP	Swagelok CAP, 1/4" VCR	2
7	SS-8-VCR-2-GR	GASKET RETAINER, 1/2"	1
8	SS-DSTW4	VALVE, HIGH PURITY 3/8" TBW	2
9	AD-64SS-TSTS-P	REDUCER, 3/8" X 1/4"	1
10	SS-8-VCR-CP	CAP, 1/2" VCR	1
11	0215-0002	BASE	1
12	0215-0001	CYLINDER, STAINLESS STEEL, 150cc	1
13	0215-0004	CAP	1
14	0215-0007	VALVE STEM, INLET	1
15	0215-0006	VALVE STEM, OUTLET	1
16	0215-0005	DIP TUBE	1



TOLERANCES UNLESS OTHERWISE SPECIFIED

ANGULAR: ±0.5° ±0°30'

ONE PLACE DECIMAL: ±.1in [±.254mm]

TWO PLACE DECIMAL: ±.01in [±.25mm]

THREE PLACE DECIMAL: ±.005in [±.127mm]

BREAK ALL SHARP CORNERS: R.02/01in [R.50/.25mm]

SURFACE FINISH: 63 [1.6]

INTERPRET GEOMETRIC TOLERANCING PER THIRD ANGLE PROJECTION

UNLESS OTHERWISE SPECIFIED: PRIMARY DIMENSIONS ARE INCH. ALTERNATE UNITS ARE MM.

PRECISION FABRICATORS LTD.
171 TOSCA DRIVE
STOUGHTON, MA 02072
(781) 341-7241 PHONE
(781) 341-7245 FAX

NAME: MJC DATE: 6/30/2014

TITLE: PFL 100CC FLAT TOP CUSTOMER DWG

SIZE: B DWG. NO.: 0215-03 - 100CC REV: 1

DO NOT SCALE DRAWING SCALE: 1:3 SHEET 1 OF 12

NOTICE OF CONFIDENTIAL INFORMATION

INFORMATION CONTAINED HEREIN IS CONFIDENTIAL AND IS THE PROPERTY OF PRECISION FABRICATORS LTD. WHERE FURNISHED TO A CUSTOMER IT SHALL BE USED SOLELY FOR PURPOSES OF INSPECTION INSTALLATION, OR MAINTENANCE. WHERE FURNISHED TO A SUPPLIER IT SHALL BE USED SOLELY IN THE PERFORMANCE OF WORK CONTRACTED FOR BY THIS COMPANY. THE INFORMATION SHALL NOT BE USED OR DISCLOSED BY THE RECIPIENT FOR ANY OTHER PURPOSE WHATSOEVER.