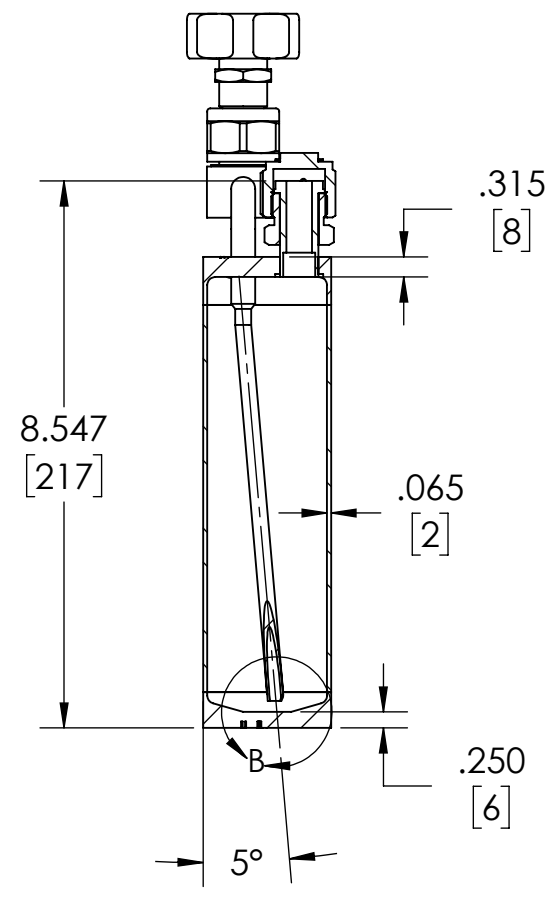
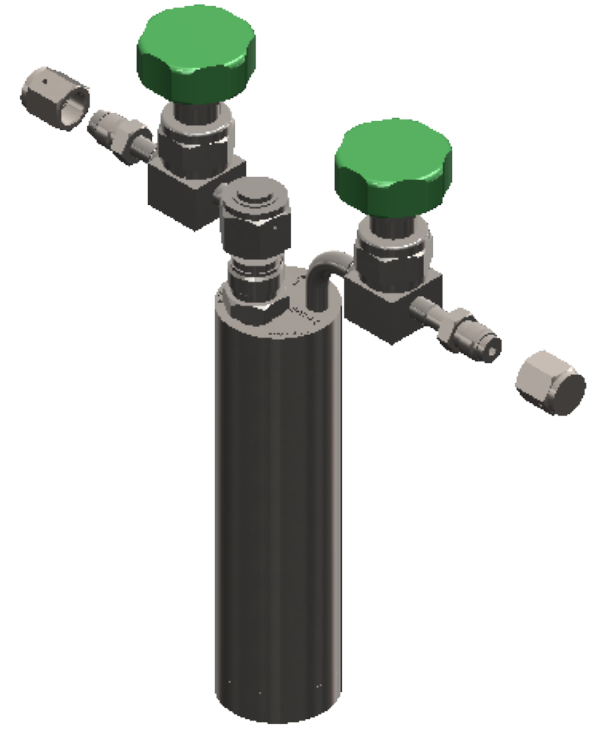
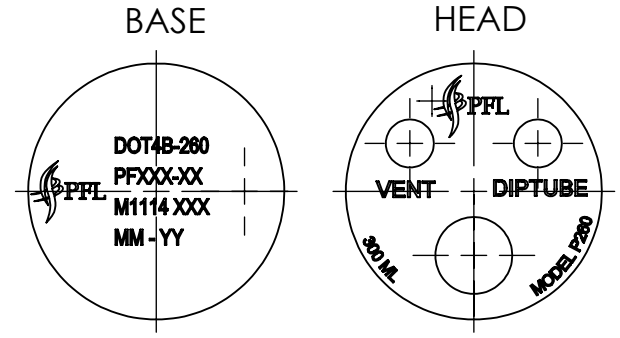
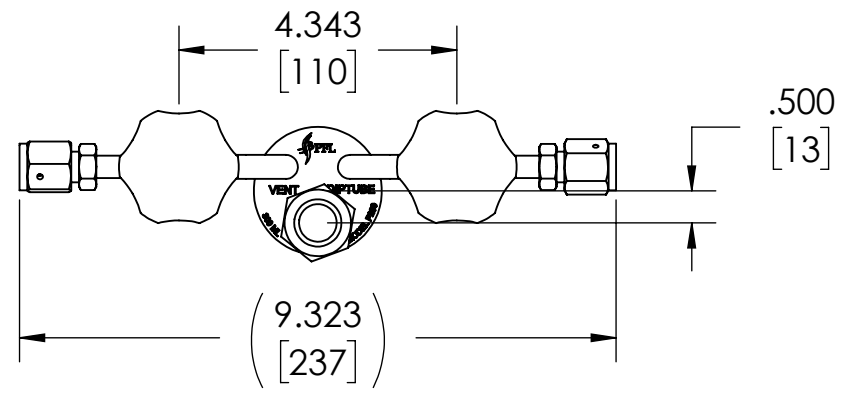
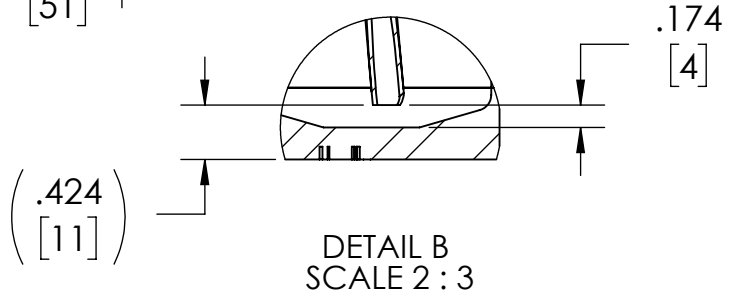
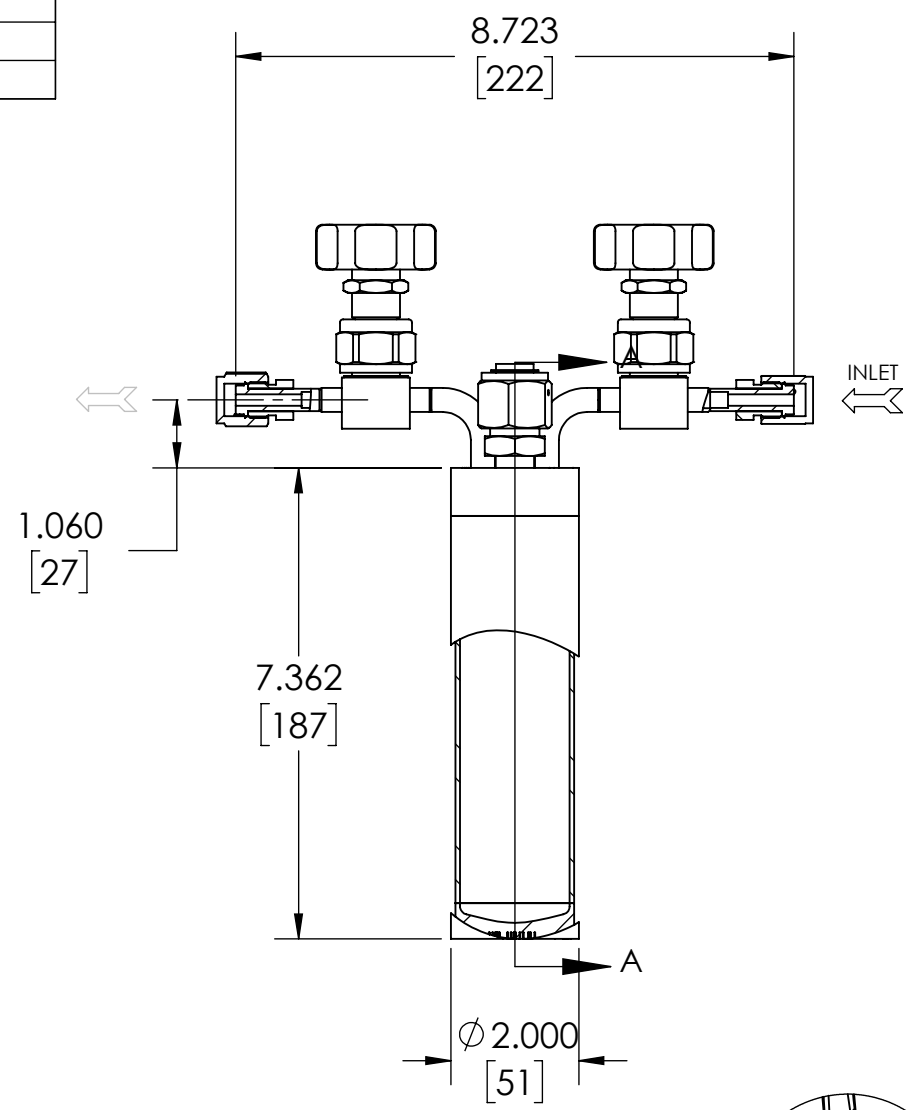


DESIGN SPECIFICATION	
CYLINDER MODEL	P260 300CC HORIZ
CYLINDER SIZE	2" DIAMETER
CYLINDER WORKING VOLUME	300ml
TOTAL CYLINDER VOLUME	302ml
CYLINDER TARE WEIGHT	4.25 lbs
DESIGN PRESSURE	260 psi
DESIGN TEMPERATURE	250F/121C
INTERNAL FINISH	10ra, MIRROR, ELECTROPOLISH
EXTERNAL FINISH	10ra, MIRROR, ELECTROPOLISH
FILLPORT	SWAGELOK, 1/2 VCR
INLET VALVE	SWAGELOK, SS-DSTW-4
OUTLET VALVE	SWAGELOK, SS-DSTW-4
THERMOWELL	NO
DIPTUBE	YES
MATERIAL OF CONSTRUCTION	316L SS
TEST PRESSURE	520 psi
D.O.T. SPECIFICATION	4B-260
TOLERANCE (UNLESS OTHERWISE SPECIFIED)	±.060



SECTION A-A



DETAIL B
SCALE 2 : 3

ZONE	REV.	DESCRIPTION	DATE	APPROVED
	01	INITIAL RELEASE	10/20/2014	
	02	UPDATE UNIT OF MEASURE	12/16/2015	



TOLERANCES UNLESS OTHERWISE SPECIFIED

ANGULAR:	±0.5°	±0°30'
ONE PLACE DECIMAL:	±.1in	[±.254mm]
TWO PLACE DECIMAL:	±.01in	[.25mm]
THREE PLACE DECIMAL:	±.005in	[±.127mm]
BREAK ALL SHARP CORNERS:	R.02/01in	[R.50/.25mm]
SURFACE FINISH:	63	[1.6]

INTERPRET GEOMETRIC TOLERANCING PER THIRD ANGLE PROJECTION
UNLESS OTHERWISE SPECIFIED: PRIMARY DIMENSIONS ARE INCH. ALTERNATE UNITS ARE MM.

PRECISION FABRICATORS LTD.
171 TOSCA DRIVE
STOUGHTON, MA 02072
(781) 341-7241 PHONE
(781) 341-7245 FAX

NOTICE OF CONFIDENTIAL INFORMATION

INFORMATION CONTAINED HEREIN IS CONFIDENTIAL AND IS THE PROPERTY OF PRECISION FABRICATORS LTD. WHERE FURNISHED WITH A PROPOSAL THE RECIPIENT SHALL USE IT SOLELY TO EVALUATE THE PROPOSAL. WHERE FURNISHED TO A CUSTOMER IT SHALL BE USED SOLELY FOR PURPOSES OF INSPECTION INSTALLATION, OR MAINTENANCE. WHERE FURNISHED TO A SUPPLIER IT SHALL BE USED SOLELY IN THE PERFORMANCE OF WORK CONTRACTED FOR BY THIS COMPANY. THE INFORMATION SHALL NOT BE USED OR DISCLOSED BY THE RECIPIENT FOR ANY OTHER PURPOSE WHATSOEVER.

	NAME	DATE
DRAWN	MJC	10/19/2014
CHECKED	DBD	12/31/1799
ENG APPR.	DBD	12/31/1799
MFG APPR.	EJY	12/31/1799
Q.A.		12/31/1799

TITLE: P260 - 300CC HORIX	
SALES	
SIZE B	DWG. NO. 0260P-0001 Ereztech Sales Only
REV 01	